

# 11-year-old, female/spayed, Shih Tzu

## History

- Several days of decreased appetite and apparent discomfort

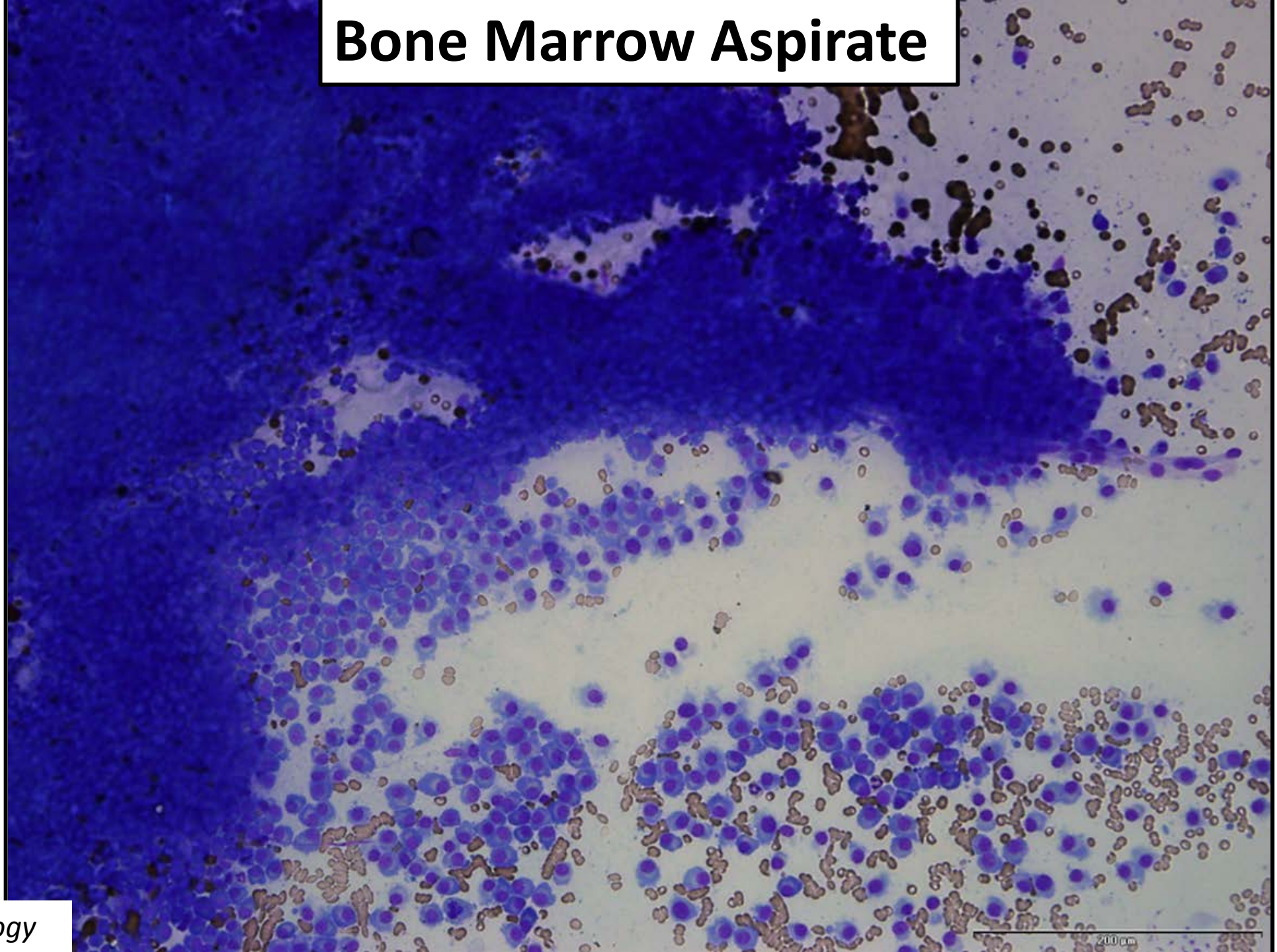
## Physical Examination

- Painful on abdominal palpation

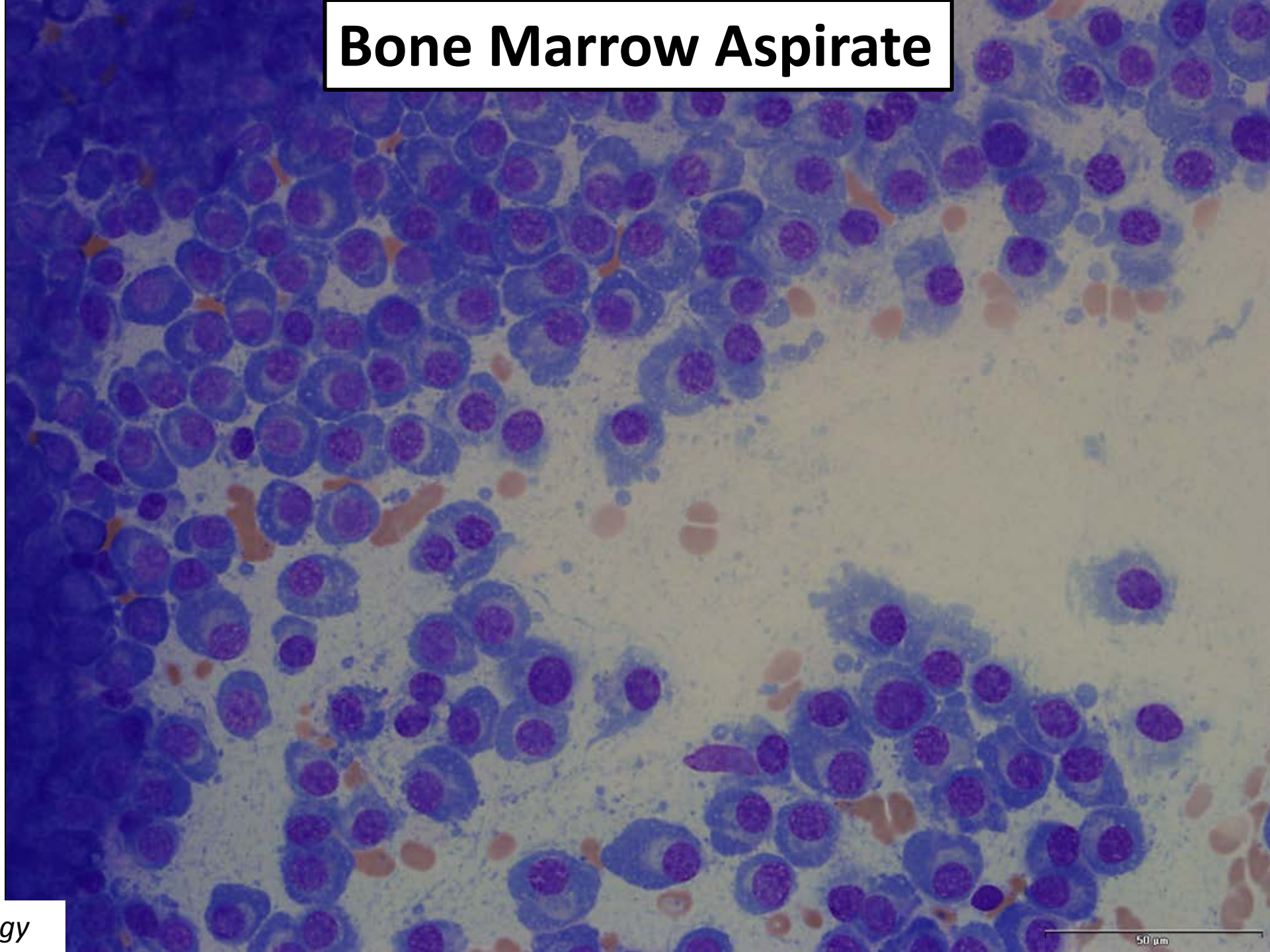
## Radiographic Findings

- Several lytic vertebral lesions
- Most severe at L4 vertebral body

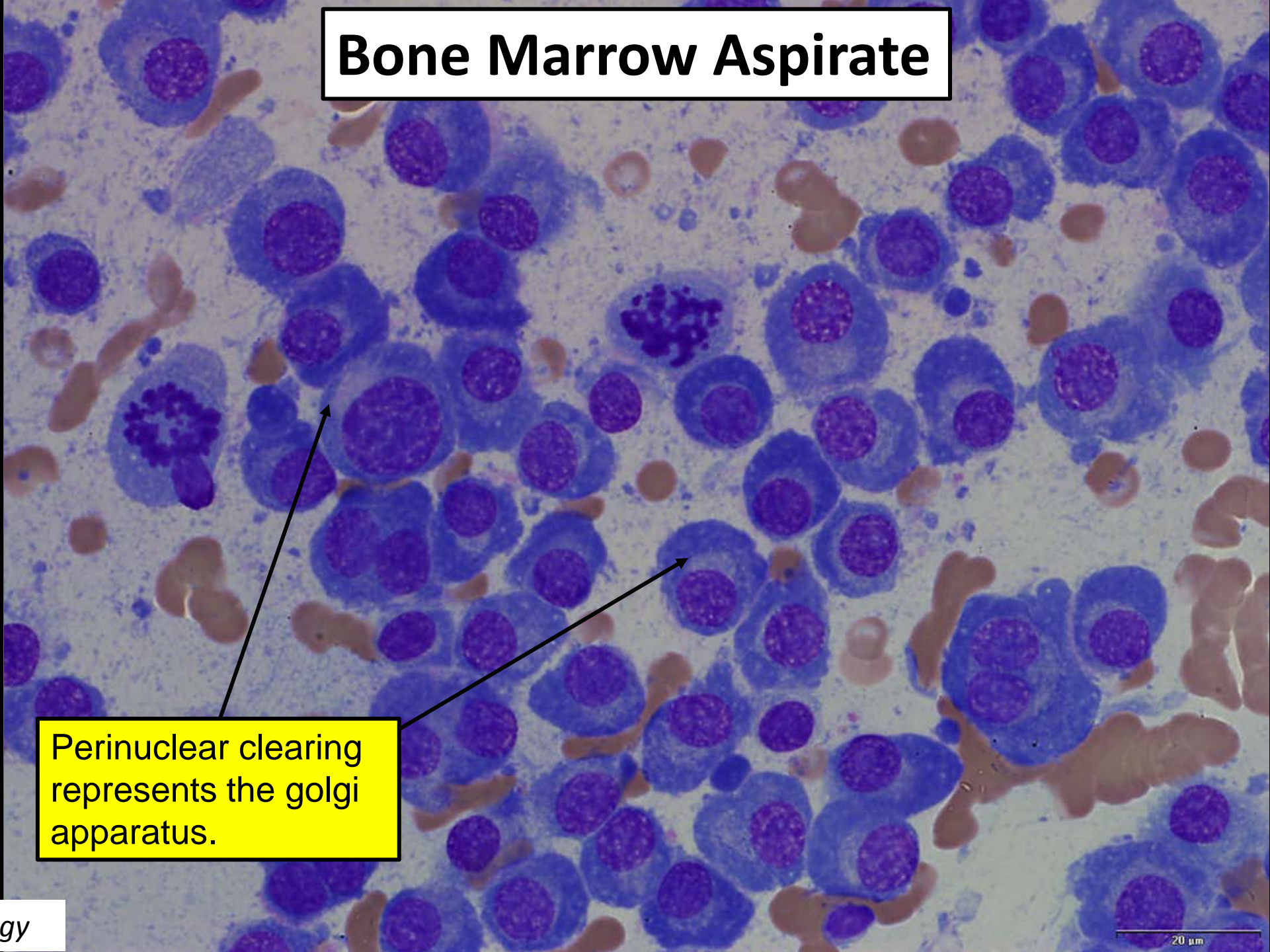
# Bone Marrow Aspirate



# Bone Marrow Aspirate



# Bone Marrow Aspirate

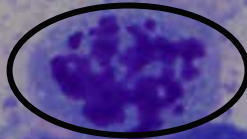
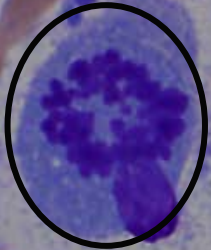


Perinuclear clearing represents the golgi apparatus.

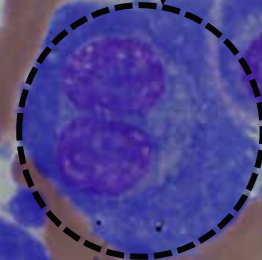
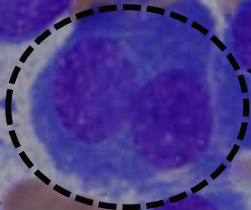
20  $\mu$ m

# Bone Marrow Aspirate

Mitotic figures



Binucleated cells



20 μm

# All nucleated cells are plasma cells

## Cytologic Diagnosis: Myeloma

